

TOSHIBA

Satellite® P25 Series

Feature Model(s):

Satellite P25-S526

P4 3.2GHz/17" WXGA/512MB/80GB/DVD-SuperMulti/Mdm/LAN/ Wi-Fi bg/WinXP Home

Satellite P25-S5261

P4 3.2GHz/17" WXGA/512MB/80GB/DVD-SuperMulti/Mdm/LAN/ Wi-Fi bg/WinXP Pro

Part Numbers

PSP20U-5091HV

PSP20U-5091H6

Product Highlights

Performance

- Intel® Pentium® 4 Processor with HT Technology
- 512MB of Main Memory

Great Features

- 80GB¹ hard disk drive
- DVD-SuperMulti drive
- 17" widescreen WXGA TFT active matrix display²

Get On-Line

- Integrated V.92/56K modem
- Integrated 10/100 Ethernet LAN
- Integrated Wireless LAN (802.11bg)³

System Characteristics

Operating System

- Microsoft® Windows® XP Home pre-installed (P25-S526)
- Microsoft® Windows® XP Professional pre-installed (P25-S5261)

CPU/Chipset Information

- Intel® Pentium® 4 Processor with HT Technology 3.2GHz⁴
- 512KB L2 cache integrated on die
- 800MHz Processor System Bus Speed
- Intel® 865PE + ICH5 chipset

Memory

- 512MB DDR SDRAM (Expandable to 2048MB) (Both slots may be occupied)
 - Data/Address Bus Width: 64bit/32bit
- Optional available expansion memory modules: 256MB/512MB/1024MB, SODIMM; Memory compatible with PC2100 DDR SDRAM

Mass Storage/Optical Drive

- **Primary Hard Disk Drive:** 80GB¹ hard disk drive, Enhanced IDE (ATA-6) interface, 4200rpm drive rotation; 9.5mm height, Service Removable
- **DVD-SuperMulti Drive:** Enhanced IDE (ATAPI) Interface; Maximum speed: CD-ROM (24x read), CD-R(24x read/16x write), CD-RW(12x read/4x write), DVD-ROM(8x read), DVD-R (4x read/4x write), DVD-RW (4x read/2x write), DVD+R (4x read/2.4x write), DVD+RW (4x read/2.4x write), DVD-RAM (2x read/2x write); Main module bay removable
- **Optional Storage/Optical Drives:** see accessory section for optional drives for Main and 2nd Module Bay

Graphics/Video

- 17" widescreen TFT WXGA LCD², display supports up to 16M colors at 1440x900
- NVIDIA® GeForce™ FX Go5200 graphics controller; 64MB DDR external video memory
- Direct3D and OpenGL supported by hardware
- Supported external resolution/color/maximum external refresh rate (depending on CRT):

800 x 600	16bit/32bit colors/60/70/72/75/85/100/120 Hz
1024 x 768	16bit/32bit colors/60/70/72/75/85/100/120 Hz
1280 x 800	16bit/32bit colors/57/60/70/72/75/85/100/120 Hz
1280 x 1024	16bit/32bit colors/60/70/72/75/85/100/120 Hz
1440 x 900	16bit/32bit colors/60/70/72/75/85/100 Hz
1600 x 1200	16bit/32bit colors/60/70/72/75/85/100 Hz
1680 x 1050	16bit/32bit colors/60/70/72/75/85/100 Hz
1920 x 1200	16bit/32bit colors/60 Hz
1920 x 1440	16bit/32bit colors/60 Hz
2048 x 1536	16bit/32bit colors/60 Hz

Input Devices

- **Keyboard:** Full sized 85 keys with 12 function keys, 2.7mm key stroke, 6mm height; Dedicated Windows® keys support; HotKey function; TouchPad pointing device (with scroll function supported

- by software)
- **CD Control Function:** Play/Pause, Stop/Eject, Previous, Skip/Next (Only works when system is turned on)

Expandability

- 2 memory slots available (both slots may be occupied)
- 2 PC Card slot support 2 Type II or 1 Type III

Communications

- Integrated V.92/56K modem; Data and fax support
Due to FCC limitations, speeds of 53kbps are the maximum permissible transmission rates during download. Actual data transmission speeds will vary depending on line conditions.
- Integrated 10/100 Ethernet LAN
- Integrated Wireless LAN (Atheros 802.11bg)³

Ports

- Parallel printer port
- RGB (monitor) port
- 4 Universal Serial Bus ports (USB)
- FIR infrared
- TV-Out Port (S-video)
- RJ-45 LAN Port
- RJ-11 modem port
- i.Link® port (IEEE 1394)
- Secure Digital® card slot

Physical Description

- Dimensions (LxWxH): 16.5" x 11.5" x 1.85" (2.05" with feet)
- Weight: starting at 9.92 lbs⁵
- LED Indicators: Power/System Sleep/Suspend status, HDD, Module Bay drive (if installed), DC-IN, Caps Lock, Arrow, Numeric, Main Battery Charging Status, SD Card, Wireless Communication switch

Sound

- Realtek ALC202 Codec Chip; Software Sound
- Sound Volume (by dial), Direct 3D Sound (supported by driver), DirectSound (supported by hardware) and DirectMusic (supported by hardware); MIDI (playback) Support; Full Duplex Support
- Built-in Harman Kardon stereo speakers
- **Ports:** External microphone port (monaural), headphone port (stereo), line-in port

Power Supply

- **AC Adapter:** 120W external AC Adapter, 100-240V / 50-60Hz frequency (Universal) input voltage, 19V x 6.3A Output.
- **Dimensions (LxWxH):** 5.91" x 2.56" x 1.57"
- **Weight:** starting at 1.39lbs⁵
- **Battery Pack:** 12-cell, rechargeable, removable Lithium Ion (Li-Ion) battery, 14.8V x 6450mAh
- **Dimensions (LxWxH):** 5.20" x 5.94" x 0.945"
- **Weight:** starting at 1.43 lbs⁵
- Battery Saver (in Windows XP): Stand by, HDD Auto Off, Display Auto Off, Hibernation
- Battery life (main batt): Please see battery life section⁶
- Recharge time (main off/on): Approx 12H(on)/ 4H(off)
Battery life may vary depending on product model, configuration, applications, power management settings and features utilized. Recharge time varies depending on usage. Battery may not charge while computer is consuming full power. After a period of time, the battery will lose its ability to perform at maximum capacity and will need to be replaced. This is normal for all batteries. To purchase a new battery pack, see the accessories that shipped with your computer or visit the Toshiba website at www.accessories.toshiba.com

Security

- Slot for computer lock; HDD, built-in Modem, Wireless LAN module, and memory (each by 2 screws); Main Battery Pack (sliding lock and latch); Main Module Bay and 2nd Module Bay (both by sliding lock and latch); User Power-on password; Setup Security (by help of SVPW utility); Keyboard Lock and Screen Blank (both by Hotkey); Screen Saver (by software)

Toshiba America Information Systems Inc. ("TAIS") shall not be liable for damages of any kind for use of this information, which is subject to change without notice.

©2004 Toshiba America Information Systems, Inc. All rights reserved

.Satellite_P25-S526_v1.1

Created on 7/21/2004 4:35 PM Rev. 1.1

Page 1 of 9

Bios

- ACPI, PnP, VESA, DPMS, DDC, SM BIOS, PCI BIOS support

Additional Software

- Microsoft® Works®
- Microsoft® Office OneNote™ 2003
- Software Decoder: InterVideo® (Win-DVD™ 4) -w/SRS TruSurround XT® Technology (SRS TruSurround XT® Technology features: TruSurround, SRS Dialog Clarity Enhancement, & TruBass)
- Drag'n Drop™ CD+DVD software
- InterVideo WinDVD Creator 2 Platinum
- ArcSoft® ShowBiz® DVD Version 1.3
- Intuit® Quicken® New User Edition 2004
- Norton AntiVirus™ 2004 – w/3-Month Subscription
- AOL® (3 –Month offer)
AOL OFFER DETAILS: Availability may be limited, especially during peak times. TO AVOID BEING CHARGED A MONTHLY MEMBERSHIP FEE, SIMPLY CANCEL BEFORE THE THREE-MONTH PROMOTIONAL PERIOD ENDS. Premium services carry surcharges and communication surcharges may apply, including AK, even during promotional period. Members may incur telephone charges on their phone bill, depending on their location and calling plan, even during promotional period. Available to new AOL members in the United States, age 18 or older; a major credit card or checking account is required.
- Adobe® Acrobat Reader
- AT&T® Worldnet® Service – 1 Month FREE
Telephone access and other charges and other terms and conditions may apply. Offer available to new customers only.
- QuickTime™ Player
- RealOne™ Player 8 Basic
- Microsoft® Internet Explorer

Toshiba Software

- Toshiba Notebook Maximizer
- Toshiba ConfigFree™
- Toshiba Custom Utilities

Warranty

- 1 year parts, labor and battery limited warranty

SelectServ® Warranty Programs

Selected Toshiba Services Warranty Upgrades and Extensions*

- 2nd/3rd Year Warranty Extension SWP-PEQQ3V
- 3 Year SystemGuard + Warranty Extension SWP-PEGQ3V
- 3 Year At-Home Repair + Warranty Extension SWP-PEQH3V
- 3 Year ServiceExpress + Warranty Extension SWP-PEQP3V
- 3 Year Business On-Site Repair + Warranty Extension SWP-PEQN3V

* Additional programs are available. Visit www.extendedwarranty.toshiba.com for more information

Environmental Specifications

- **Temperature:** Operating: 5° to 35°C (41° to 95°F); Non-operating: -20° to 65°C (-4° to 149°F)
- **Thermal gradient:** Operating: 15°C per hour maximum; Non-operating: 20°C per hour maximum
- **Relative Humidity:** Operating: 20% to 80%; Non-operating: 10% to 95% non-condensing
- **Altitude (relative to sea level):** Operating: -60 to 3,000 meters; Non-operating: -60 to 10,000 meters
- **Shock:** Operating: 10G; Non-operating: 60G
- **Vibration:** Operating: 0.5G; Non-operating: 1.0G

Selected Accessories

Category	Part Number	Description
AC adaptor	PA3290U-1ACA	Global AC Adapter (120W)
Primary Battery	PA3291U-1BRS	Battery Pack (12 cell)
FDD	PA3109U-1FDD	USB Floppy Disk Drive
Storage & Backup	PA3133U-1H40	2nd HDD 40GB
Storage & Backup	PA3204U-1H60	2nd HDD 60GB
Storage & Backup	PA3230U-1H80	2nd HDD 80GB
Storage & Backup	PA3292U-1ETC	Modular Bay HDD Adapter
Bluetooth	PA3271U-1BTM	Bluetooth SD Card II
Storage & Backup	SD-M3203B3	32MB SD Card
Storage & Backup	SD-M6403B3	64MB SD Card
Storage & Backup	SD-M1283B3	128MB SD Card
Storage & Backup	SD-M2564B3	256MB SD Card
Memory	KTT3614/128	Kingston 128MB Memory
Memory	KTT3614/256	Kingston 256MB Memory
Memory	KTT3614/512	Kingston 512MB Memory
Memory	KTT3614/1G	Kingston 1GB Memory Module
Cases	PA1323U-1NCS	Toshiba Roller/BackPack (case only suitable for this notebook)

Go to www.accessories.toshiba.com for additional, available accessories

¹Hard Drive Capacity. 1 Gigabyte (GB) means 1000 x 1000 x 1000 = 1,000,000,000 bytes using powers of 10. The computer operating system, however, reports storage capacity using powers of 2 for the definition of 1 GB = 1024 x 1024 x 1024 = 1,073,741,824 bytes, and therefore may show less storage capacity. Available storage capacity will also be less if the product includes one or more pre-installed operating systems, such as Microsoft Operating System and/or pre-installed software applications, or media content. Actual formatted capacity may vary.

²TFT Disclaimer. Small bright dots may appear on your TFT display when you turn on your PC. Your display contains an extremely large number of thin-film transistors (TFT) and is manufactured using high-precision technology. Any small bright dots that may appear on your display are an intrinsic characteristic of the TFT manufacturing technology. Over a period of time, and depending on the usage of the computer, the brightness of the LCD Screen will deteriorate. This is an intrinsic characteristic of LCD technology.

³The transmission speed over the wireless LAN and the distance over which wireless LAN can reach may vary depending on surrounding electromagnetic environment, obstacles, access point design and configuration, and client design and software/hardware configurations. The actual transmission speed will be lower than the theoretical maximum speed.

⁴Central Processing Unit ("CPU") Performance Disclaimer: CPU performance in your computer product may vary from specifications under the following conditions:

1. use of certain external peripheral products
2. use of battery power instead of AC power
3. use of certain multimedia, computer generated graphics or video applications
4. use of standard telephone lines or low speed network connections
5. use of complex modeling software, such as high end computer aided design applications
6. use of several applications or functionalities simultaneously
7. use of computer in areas with low air pressure (high altitude >1,000 meters or >3,280 feet above sea level)
8. use of computer at temperatures outside the range of 5°C to 30°C (41°F to 86°F) or >25°C (77°F) at high altitude (all temperature references are approximate and may vary depending on the specific computer model – please refer to your Resource Guide or visit the Toshiba website at www.pcsupport.toshiba.com for details).

CPU performance may also vary from specifications due to design configuration.

Under some conditions, your computer product may automatically shut-down. This is a normal protective feature designed to reduce the risk of lost data or damage to the product when used outside recommended conditions. To avoid risk of lost data, always make back-up copies of data by periodically storing it on an external storage medium. For optimum performance, use your computer product only under recommended conditions. Read additional restrictions under "Environmental Conditions" in your product Resource Guide. Contact Toshiba Technical Service and Support for more information.

⁵Weight may vary depending on product configuration, vendor components, manufacturing variability and options selected.

⁶Battery life may vary depending on product model, configuration, applications, power management settings and features utilized. Recharge time varies depending on usage. Battery may not charge while computer is consuming full power. After a period of time, the battery will lose its ability to perform at maximum capacity and will need to be replaced. This is normal for all batteries. To purchase a new battery pack, see the accessories information that shipped with your computer or visit the Toshiba web site at accessoryfinder.toshiba.com.

TOSHIBA

Return Policy

Notwithstanding anything to the contrary in any third party License Agreement or product documentation supplied with your PC, Toshiba America Information Systems, Inc. ("TAIS") does not accept the return of component parts, or bundled software, that have been removed from the PC system. Pro-rata refunds on individual PC components or bundled software, including the operating system, will not be granted. If you wish to return a complete PC system, contact the TAIS dealer where you purchased the product, and comply with the dealer's standard return policies and procedures.

Subject to Change

While Toshiba has made every effort at the time of publication to ensure the accuracy of the information provided herein, product specifications, configurations, prices, system/component/options availability are all subject to change without notice. For the most up-to-date product information about your computer, or to stay current with the various computer software or hardware options, visit Toshiba's Web site at pcsupport.toshiba.com.

Certain notebook chassis are designed to accommodate all possible configurations for an entire product series. Your select model may not have

all the features and specifications corresponding to all of the icons or switches shown on the notebook chassis, unless you have selected all those features.

Trademarks

Portégé, Satellite, Tecra, Slim SelectBay and SystemGuard are registered trademarks and ConfigFree is a trademark of Toshiba America Information Systems, Inc. and/or Toshiba Corporation. Intel, Celeron, Centrino, Intel Inside, Pentium, the Intel Centrino logo, and the Intel Inside logo are trademarks or registered trademarks of Intel Corporation or its subsidiaries in the United States and other countries. Microsoft and Windows are registered trademarks and OneNote is a trademark of Microsoft Corporation in the United States and/or other countries. Wi-Fi is a registered certification mark of the Wi-Fi Alliance. NVIDIA and GeForce are registered trademarks or trademarks of NVIDIA Corporation in the United States and/or other countries. MobileMark is a trademark of the Business Applications Performance Corporation. All other trademarks are the property of their respective owners. Product specifications, configurations, prices, system/component/options availability are all subject to change without notice. Reseller/Retailer pricing may vary. © 2004 Toshiba America Information Systems, Inc. All rights reserved.

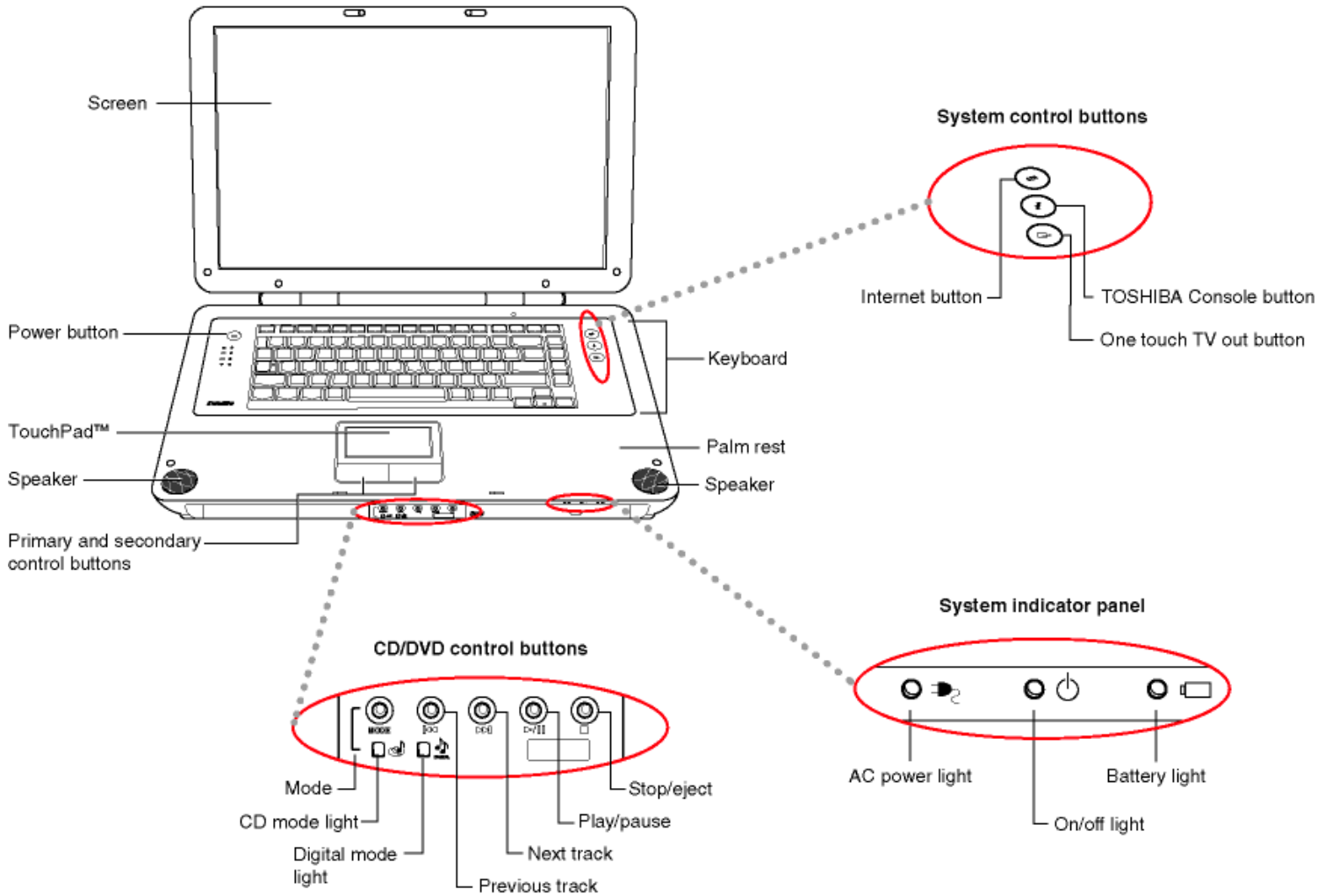
6 Business Winstone® 2002 BatteryMark™ Version 1.0

These models achieved the battery life times shown using Ziff Davis Media Inc.'s Business Winstone® 2002 BatteryMark™ Version 1.0. These tests were performed without independent verification by the VeriTest testing division of Lionbridge Technologies, Inc. ("VeriTest"). Neither Ziff Davis Media Inc. nor VeriTest makes any representations or warranties as to the results of the tests. Winstone® is a registered trademark and BatteryMark™ is a trademark of Ziff Davis Publishing Holdings Inc. in the U.S. and other countries. Copyright 2002 Ziff Davis Media Inc. All Rights Reserved. All products used in the tests were shipping versions available to the general public. The battery life results were achieved running the Business Winstone® 2002 BatteryMark™ Version 1.0 on the following system parameters. System parameters were set according to Ziff Davis Media Inc.'s recommendations.

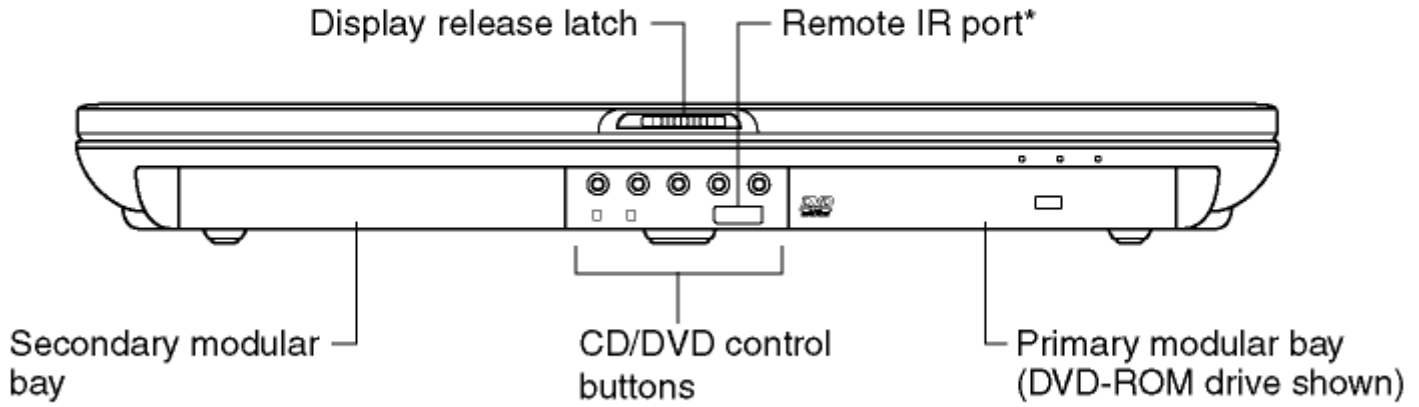
Battery Life	Catalog Spec (1st)	2.0H	2.0H	1.5H	2.0H
	(1st+2nd)	-	-	-	-
	Number of Conditioning Phase	1	1	1	1
	Life Test Run	2	2	2	2
CPU Name	Intel® Pentium®4 Processor				
Processor info	speed	2.4GHz	2.8GHz	3.2GHz	2.8GHz
	number of processors	1	1	1	1
amount of RAM	256MB	512MB	2048MB	512MB	512MB
Amount of secondary RAM cache	512KB	512KB	512KB	512KB	512KB
Battery	type(1st)	Li-Ion	Li-Ion	Li-Ion	Li-Ion
	model number(1st)	14.8Vx6450mAh(12cell)	14.8Vx6450mAh(12cell)	14.8Vx6450mAh(12cell)	14.8Vx6450mAh(12cell)
	type(2nd)	PA3291U-1BAS/1BRS	PA3291U-1BAS/1BRS	PA3291U-1BAS/1BRS	PA3291U-1BAS/1BRS
	model number(2nd)	-	-	-	-
	number of batteries	1st=1, 2nd=0	1st=1, 2nd=0	1st=1, 2nd=0	1st=1, 2nd=0
Graphics	nVIDIA NV34M				
amount and type of RAM	32MB	32MB	64MB	64MB	64MB
	DDR	DDR	DDR	DDR	DDR
graphics driver name and version	nVIDIA Display Driver for GeForce FX Gx5200	nVIDIA Display Driver for GeForce FX Gx5200	nVIDIA Display Driver for GeForce FX Gx5200	nVIDIA Display Driver for GeForce FX Gx5200	nVIDIA Display Driver for GeForce FX Gx5200
graphics resolution and color depth, refresh rate	17" Wide 1440x900/32bit/60Hz	17" Wide 1440x900/32bit/60Hz	17" Wide 1440x900/32bit/60Hz	17" Wide 1440x900/32bit/60Hz	17" Wide 1440x900/32bit/60Hz
hard disk capacity	40GB (4200rpm)	60GB (4200rpm)	60GB (5400rpm)	60GB (5400rpm)	60GB (5400rpm)
hard disk file system & transfer mode+C15	Enhanced IDE(ATA-5)	Enhanced IDE(ATA-5)	Enhanced IDE(ATA-5)	Enhanced IDE(ATA-5)	Enhanced IDE(ATA-5)
hard disk controller model	Intel® 82801EBM	Intel® 82801EBM	Intel® 82801EBM	Intel® 82801EBM	Intel® 82801EBM
size of hardware cache if any	-	-	-	-	-
operating system version, service pack	Windows XP Professional Service Pack 1	Windows XP Professional Service Pack 1	Windows XP Professional Service Pack 1	Windows XP Professional Service Pack 1	Windows XP Professional Service Pack 1
other special conditions	N/A	N/A	N/A	N/A	N/A
BIOS version	V0.10	V0.10	V0.10	V0.10	V0.10
Power management setting	see another sheet	see another sheet	see another sheet	see another sheet	see another sheet

Power Save Mode		MaximumPerformance	MaximumPerformance	MaximumPerformance	MaximumPerformance	MaximumPerformance	
Power Save Mode	Cooling Method	-	-	-	-	-	
	Intel(R) SpeedStep(TM) Technology	-	-	-	-	-	
	Processor speed	100%-75%	-	-	-	-	-
		74%-50%	-	-	-	-	-
		49%-25%	-	-	-	-	-
		24%-0%	-	-	-	-	-
	Monitor brightness (* See Notes)	100%-75%	4	4	4	4	4
		74%-50%	4	4	4	4	4
		49%-25%	4	4	4	4	4
		24%-0%	4	4	4	4	4
	Turn off monitor	100%-75%	NEVER	NEVER	NEVER	NEVER	NEVER
		74%-50%	NEVER	NEVER	NEVER	NEVER	NEVER
		49%-25%	NEVER	NEVER	NEVER	NEVER	NEVER
		24%-0%	NEVER	NEVER	NEVER	NEVER	NEVER
	Turn off hard disks	100%-75%	3min	3min	3min	3min	3min
		74%-50%	3min	3min	3min	3min	3min
		49%-25%	3min	3min	3min	3min	3min
		24%-0%	3min	3min	3min	3min	3min
	System standby	100%-75%	NEVER	NEVER	NEVER	NEVER	NEVER
		74%-50%	NEVER	NEVER	NEVER	NEVER	NEVER
49%-25%		NEVER	NEVER	NEVER	NEVER	NEVER	
24%-0%		NEVER	NEVER	NEVER	NEVER	NEVER	
System Hibernate	100%-75%	NEVER	NEVER	NEVER	NEVER	NEVER	
	74%-50%	NEVER	NEVER	NEVER	NEVER	NEVER	
	49%-25%	NEVER	NEVER	NEVER	NEVER	NEVER	
	24%-0%	NEVER	NEVER	NEVER	NEVER	NEVER	
System Power Mode	When I press the power button	Power off	Power off	Power off	Power off	Power off	
	When I close the lid	Hibernate	Hibernate	Hibernate	Hibernate	Hibernate	
	Prompt for password when computer goes off Standby or Hibernation	Off	Off	Off	Off	Off	
Alarm	Activate low battery alarm when power level reaches	Off	Off	Off	Off	Off	
	Low Battery Alarm Action	Sound alarm	Off	Off	Off	Off	
		Display message	On	On	On	On	On
		When the alarm goes off, the computer will:	Off	Off	Off	Off	Off
	When the alarm occurs, run this program:	Off	Off	Off	Off	Off	
	Activate critical battery alarm when power level reaches	Off	Off	Off	Off	Off	
	Critical Battery Alarm Action	Sound alarm	Off	Off	Off	Off	Off
		Display message	On	On	On	On	On
When the alarm goes off, the computer will:		On(Hibernate)	On(Hibernate)	On(Hibernate)	On(Hibernate)	On(Hibernate)	
When the alarm occurs, run this program:	Off	Off	Off	Off	Off		
Device Settings	Control device power management	Off	Off	Off	Off	Off	
	TOSHIBA Wireless LAN Mini PCI Card	TOSHIBA Wireless LAN Mini PCI Card	-	-	-	-	
		NEC PCI to USB Open Host Controller	-	-	-	-	
		NEC PCI to USB Open Host Controller	-	-	-	-	
		NEC PCI to USB Enhanced Host Controller (B1)	-	-	-	-	
Always show a confirmation message when you are going to have the selected device disabled	-	-	-	-	-		
Hibernate	Enable Hibernate Support	On	On	On	On	On	
	Enable CODEC Power Saving	-	-	-	-	-	
Sound Setup	Turn off CODEC Power after : (When no sound is playing)	Enable External Amplifier Power Down	-	-	-	-	
		Enable External Amplifier Power Down	-	-	-	-	
		Enable External Amplifier Power Down	-	-	-	-	
Wireless Network	Edit Configuration (Advanced)	Card Power Management	-	-	-	-	
	Slide Switch	Off	Off	Off	Off	Off	

Front with display open

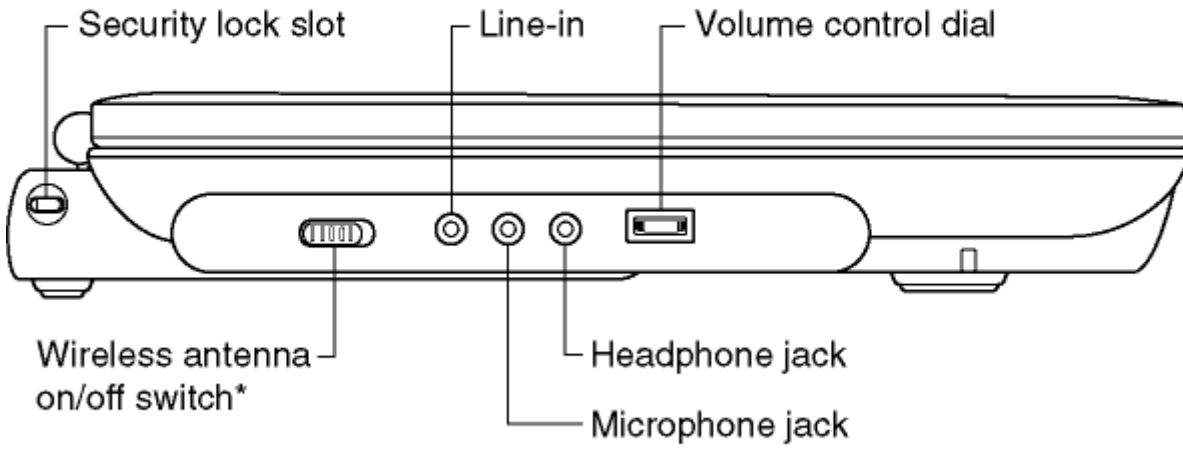


Front with display closed



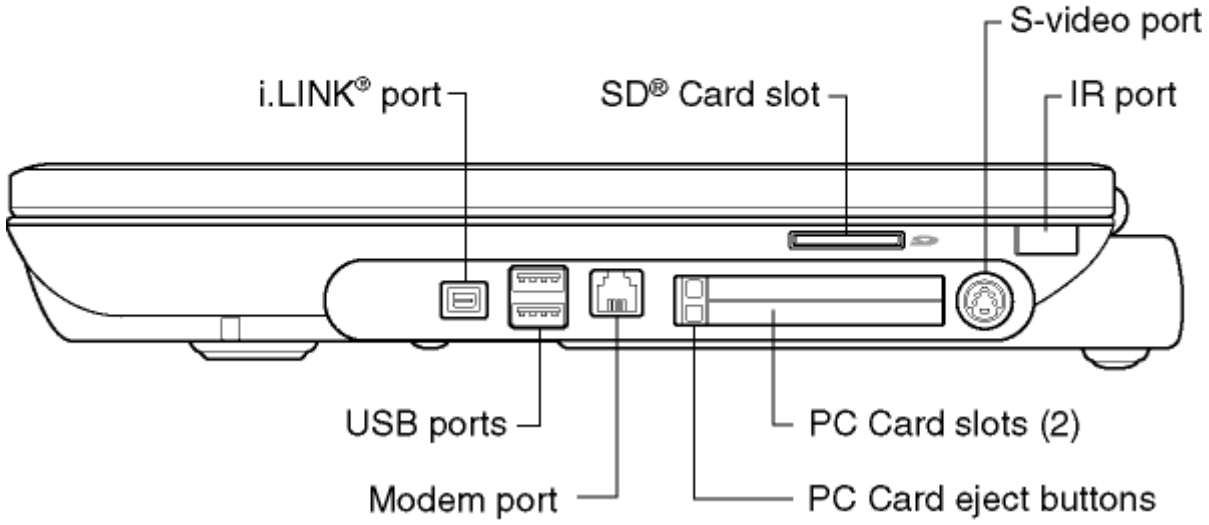
*Functional only with optional Toshiba remote control.

Left side



*Functional only on systems with wireless module installed.

Right side



Back

