

Using the Hard Disk Drive (HDD) Recovery Utilities with Your Satellite[®] Computer

Your computer has been configured with a hard disk partition to allow you to recover your hard disk drive or reinstall selected applications and software features or utilities.

Back up your data externally before performing any of the tasks in this section.

NOTE It is strongly recommended that you create recovery CDs/DVDs before using your system. For more information on creating Recovery media, see "Creating Recovery CDs/DVDs" on page 2.

Using the HDD Recovery, you can:

- ❖ Create Hard Drive Recovery CDs or DVDs using a writable drive.
- ❖ Recover your hard disk drive to the factory-set default.
- ❖ Recover just your C: drive, leaving any other partitions you may have created intact, for example, a D: drive.
- ❖ Recover your hard disk drive to the factory-set default state without the HDD Recovery partition.

- ❖ Delete your hard disk drive recovery partition without the risk of losing your data.
- ❖ Reinstall drivers and applications which were bundled with your computer.

Creating Recovery CDs/DVDs

Depending on your system configuration, you may be able to copy the Hard Drive Recovery Utilities to CD or DVD. This gives you the ability to recover your hard disk drive and reclaim additional hard disk space used to store the Hard Drive Recovery Utilities on your computer.

NOTE

If your computer's optical media drive can only write to CDs, select CD as the Type on Recovery Disc Creator. If your computer's optical media drive can write to CDs or DVDs, select the media you are using as the Type on Recovery Disc Creator.

NOTE

The system prompts you to insert the appropriate number of CDs or DVDs to copy the Hard Drive Recovery Utilities. If your optical disk drive is not writable, contact TOSHIBA Customer Support to obtain the Recovery media for your system.

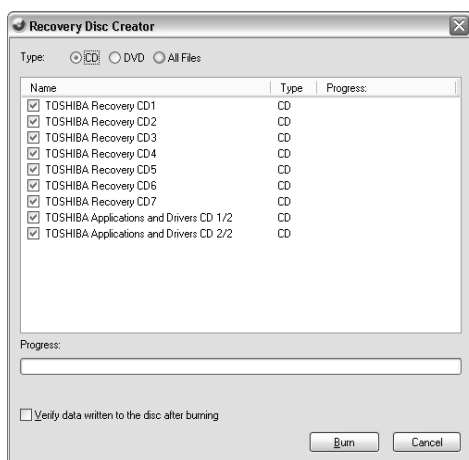
To create recovery CDs/DVDs:



- 1 Double-click the Recovery Disc Creator icon on the Windows desktop. You can also launch the application by clicking **Start, All Programs**, and then **Hard Disk Recovery Utilities**.

- 2 Select CD, DVD, or All Files (to create Recovery media on both CDs and DVDs).

NOTE When selecting All Files, your internal optical media drive can only write to CDs



Sample Recovery Disc Creator screen

- 3 Select the items you want to copy by clicking the checkbox next to the item's Name – recovery files, applications (original bundled drivers and applications), or both the recovery files and applications.
- 4 Click **Burn**.
- 5 Insert the first blank CD or DVD into your computer's CD/DVD writable drive when prompted.
- 6 Follow the on-screen prompts to complete the copy process.

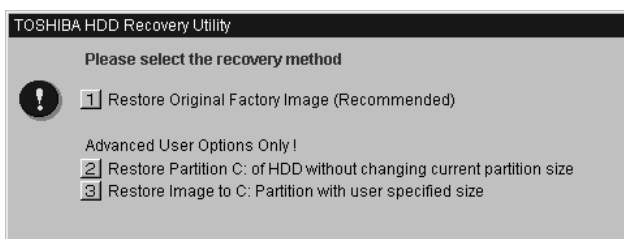
For more information on using the Recovery media you have created with the preceding steps, see “Hard Disk Drive Recovery using the Recovery media” on page 7.

Hard Disk Drive Recovery using the recovery partition

You have the options of recovering your system using the Hard Drive Recovery partition to the factory-set default, or recovering just your C: drive and leaving other partitions (for example, a D: drive) intact, or changing the size of your C: drive and then recovering it.

To recover your hard disk drive using the utilities stored on your computer’s HDD:

- 1 Make sure the computer is turned off.
- 2 Press and hold the **0** (zero) key on your keyboard while powering on the computer. When the computer powers on, the TOSHIBA HDD Recovery Utility screen displays.



Sample TOSHIBA HDD Recovery Utility screen

Recovering the original factory image (recommended)

CAUTION

Recovering a hard disk drive to its factory default setting deletes all partitions on the hard disk drive and your information will be lost. Be sure to save your work on external media before proceeding.

- 1 Press **1** on the keyboard to recover your hard disk drive to its original factory setting. A confirmation message displays reminding you that all data will be lost during the recovery process. Be sure you have saved your work on external media before proceeding.
- 2 Click **Yes** to begin the recovery. Once complete, a message displays that the HDD has been recovered.
- 3 Press any key on the keyboard to restart the computer.

Recovering the C: partition of the HDD without changing the current partition size

CAUTION

Recovering the C: drive to its factory default setting reformats your drive and your information on the recovered drive will be lost. Be sure to save your work on external media before proceeding. If you have created other partitions (for example, a D: drive), those partitions and any information on them will not be affected and will remain intact.

To recover only your C: drive:

- 1 Press **2** on the keyboard when the TOSHIBA HDD Recovery Utility screen displays. A confirmation message appears, reminding you that all information on the C: drive will be lost during the recovery process. Be sure you have saved your work on external media work before proceeding.
- 2 Click **Yes** to begin the restoration. Once complete, a message displays that the HDD has been recovered.
- 3 Press any key on your keyboard to restart the computer.

Recovering the C: partition with a user specified size

CAUTION

Resizing and recovering your C: drive to its factory default setting reformats all partitions on the HDD (for example, if you created a D: drive, it will be deleted during the recovery process) and your information will be lost. Be sure to save your work on external media before proceeding.

To resize and recover your C: drive:

- 1 Press **3** on the keyboard when the TOSHIBA HDD Recovery Utility screen displays. A confirmation message appears, reminding you that all partitions will be reformatted and all information will be lost during the recovery process. Be sure you have saved your work on external media before proceeding.

-
- 2 Click **Yes** to begin the restoration and to specify the size of the C: drive.
 - ❖ Press the Left/Right Arrow keys to increase/decrease the C: drive size by 1 GB.
 - ❖ Press the Up/Down Arrow keys to increase/decrease the C: drive size by 5 GB.

NOTE The size of the C: drive displays on the progress bar as you make your selections.

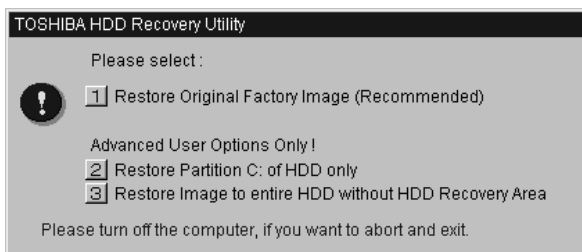
- 3 Click **Enter** to begin the restoration. Once complete, a message displays that the HDD has been recovered.
- 4 Press any key on your keyboard to restart the computer.

Hard Disk Drive Recovery using the Recovery media

If you need to recover your computer to its default factory state, you can re-build the system using your Hard Drive Recovery Utilities.

To recover your hard disk drive using the utilities burned to CDs or DVDs (refer to “Creating Recovery CDs/DVDs” on page 2):

- ❖ Insert the first recovery CD or DVD into your CD/DVD drive and power on the computer. When the computer powers on, the TOSHIBA HDD Recovery Utility screen displays.



Sample TOSHIBA HDD Recovery Utility screen

Recovering the original factory image (recommended)

CAUTION

Recovering a hard disk drive to its factory default setting deletes all partitions on the hard disk drive and your information will be lost. Be sure to save your work on external media before proceeding.

- 1** Press **1** on the keyboard to recover your hard disk drive to its original factory setting. A confirmation message displays, reminding you that all data will be lost during the recovery process. Be sure you have saved your work on external media before proceeding.
- 2** Click **Yes** to begin the recovery process. Once complete, a message displays that the HDD has been recovered.
- 3** Press any key on the keyboard to restart the computer.

Recovering the C: partition of the HDD only

CAUTION

Recovering the C: drive to its factory default setting reformats your drive and your information on the recovered drive will be lost. Be sure to save your work on external media before proceeding. If you have created other partitions (for example, a D: drive), those partitions and any information on them will not be affected and will remain intact.

To recover only your C: drive:

- 1 Press **2** on the keyboard when the TOSHIBA HDD Recovery Utility screen displays. A confirmation message appears, reminding you that all information on the C: drive will be lost during the recovery process. Be sure you have saved your work on external media before proceeding.
- 2 Click **Yes** to begin the restoration. Once complete, a message displays that the HDD has been recovered.
- 3 Press any key on your keyboard to restart the computer.

Recovering the entire HDD without the HDD Recovery Area

This option recovers your C: drive without creating the HDD Recovery Utilities partition. This will increase the size of your C: drive.

CAUTION

Recovering your C: drive to its factory default state without the recovery partition reformats all partitions on the HDD (for example, if you created a D: drive, it will be deleted during the recovery process), and your information will be lost. Be sure to save your work on external media before proceeding.

To recover your C: drive without the recovery partition:

- 1 Press **3** on the keyboard when the TOSHIBA HDD Recovery Utility screen displays. A confirmation message appears, reminding you that all partitions will be reformatted and all data will be lost during the recovery process. Be sure you have saved your work on external media before proceeding.
- 2 Click **Yes** to begin the restoration. Once complete, a message displays that the HDD has been recovered.
- 3 Press any key on your keyboard to restart the computer.

Checking the HDD operating status

After restoring your hard disk drive, you can check its status as follows:

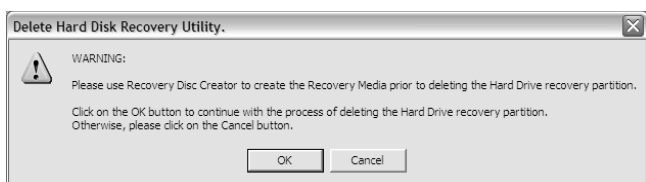
- 1 Click **Start**, and then click **Control Panel**.
- 2 Double-click the **Administrative Tools** icon.

- 3 Double-click the **Computer Management** icon.
- 4 Click **Disk Management**.
- 5 Highlight the hard disk drive in the Volume list to display its status in the lower portion of the screen.

Deleting the Hard Disk Recovery Utility

You can delete the HDD recovery partition without losing your data.

- 1 Click **Start, All Programs, Hard Disk Recovery Utilities**, and then **Delete Hard Disk Recovery Partition**. The Delete Hard Disk Recovery Utility warning screen displays.



Sample Delete Hard Disk Recovery Utility screen

- 2 Click **OK** to continue.
- 3 When the following warning screen displays, click **OK** to confirm.

After the Delete Hard Disk Recovery Utility has completed, it assigns the appropriate drive letter (for example, E: drive) for the extra space and formats the drive.



Sample Delete Hard Disk Recovery Utility confirmation screen

Installing drivers and applications

The TOSHIBA Application Installer allows you to reinstall the drivers and applications that were originally bundled with your computer.

To reinstall drivers and applications:

- 1 Double-click the Toshiba Application Installer icon on the Windows desktop. You can also launch the application by clicking **Start, All Programs, Hard Disk Recovery Utilities**, and then **Toshiba Application Installer**.
- 2 Click **Next**.
- 3 Click the item(s) you want to install.
- 4 Click **Install**.
- 5 Follow the on-screen prompts to complete the installation process.

