

IPedge Release 1.6 Software

Toshiba is happy to announce the next phase of features for the IPedge system. The latest software update complements the already powerful features of the IPedge system.

New in This Release

- [Enhancement to the Online Program Update](#)
- [15-Digit Direct Inward Dialing](#)
- [Msync](#)
- [Meeting Version 7](#)
- [Messaging Version 10.6](#)
- [CentOS/PostgreSQL Migration](#)

Enhancement to the Online Program Update

Toshiba has made an enhancement to the IPedge online program update. Outlined below is a comparison of the current program update procedure with the new and enhanced program update procedure.

Current Online Program Update Procedure

- FTP downloads offers no retry if a failure is encountered causing the update job to terminate immediately. The technician has to run the update again.
- One step update – Enterprise Manager issues the update command immediately after the download is finished.
- If the download is longer than anticipated, the user has to wait until the download has successfully finished or failed.

Enhanced Update Procedure

- Enterprise Manager retries the failed file(s) until user cancels.
- If download is longer than anticipated, users can either cancel or check the update later.
- User can perform the download only and run the update at a later time.

Pause Before Upgrading

Figure 1

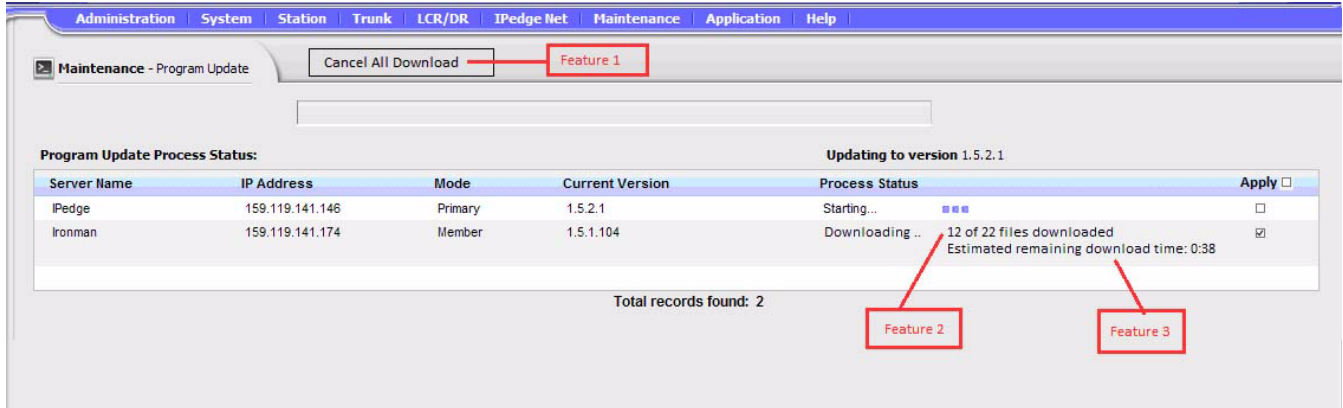


Figure 2

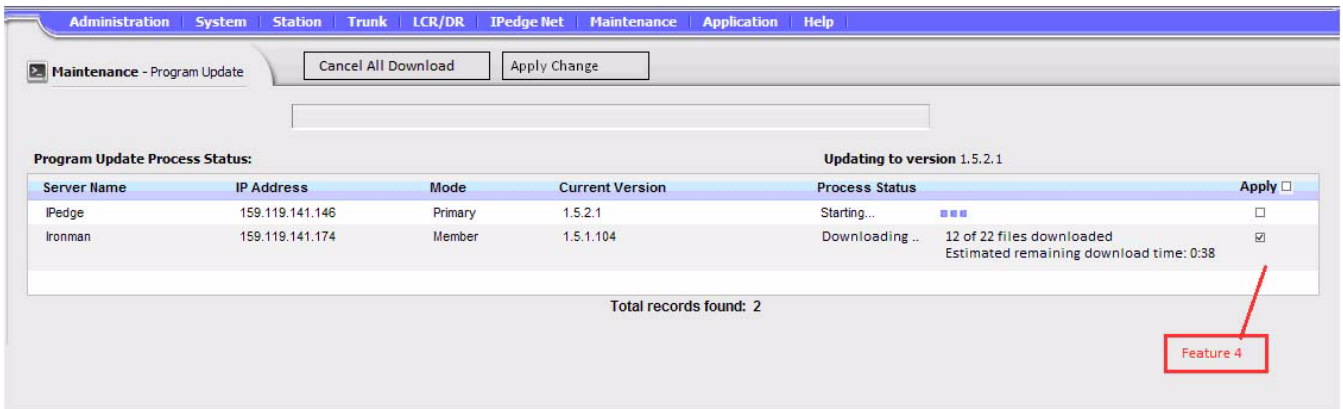
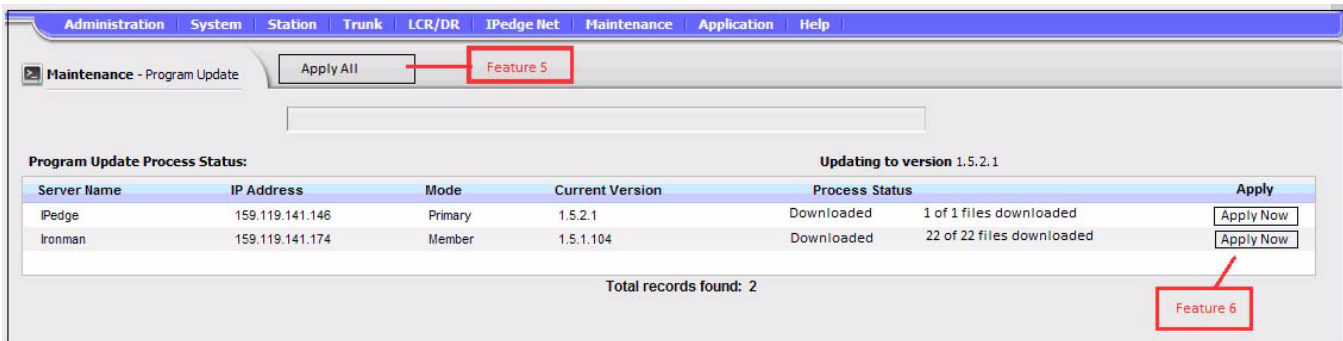


Figure 3



Benefits

Below is a summary of all the benefits of the Online Program Update enhancement.

- The online program update provides a new option to allow the user to pause between the download and update process.
- User has the option to apply the update immediately after download or wait for customer action after downloaded. (Figure 2, Feature 4).
- The default action is to download the software and wait. The user will then be able to run the upgrade at a later time.
- The download will continue downloading even if user is not logged into Enterprise Manager.
- The option of “apply immediately” or “wait” can be configured/changed while file update is starting, downloading and waiting state.
- The “Apply” column will have a fly-over explaining that checking the box will upgrade immediately after download.

15-Digit Direct Inward Dialing

With release 1.6 or later, the length of DID digits is expanded from 7 to 15. The following matching intelligence has been added:

- If the length of the received DID number is less than that of digits set:
IPedge will search the DID number table from the least significant column for the length of the received DID digits.
If only 1 digit in DID number in the table matches the received DID digits, the call is terminated on the destination of this DID number.
If there are multiple DID numbers in the table that match the received DID digits or there is no DID number in table match, the received DID digits, this call is treated as “Out Of Search.”
- If the length of the received DID number is the same or more than the digits set:
The call is treated the same as in previous versions of IPedge software. If received DID number is more than that of digits set, IPedge will search the DID number table from the little significant column for the length of received DID digits.
If there is a DID number in the table matching the received DID digits, the call is terminated on the destination of this DID number.
If there is no DID number matching the received DID digits, this call is treated as “Out Of Search.”

Msync

Msync is an Exchange Web Services connector that allows IPedge Messaging to communicate with a Microsoft Exchange server. Msync uses a service account to log into the Active Directory, and therefore does not require individual users to enter their mail credentials.

Below is a summary of the features available with Msync:

Simplified Administration

- Only requires entry of email address per user
- No need to enter user name and password per user
- No need to change passwords when Active Directory password is changed per user

Increased Security

- User passwords not stored on VM system
- Uses Exchange security protocols

Improved Exchange Integration

- No limit on inbox size (dependant on the Exchange limits set by the Administrator)
- Sent items synchronization

Unified Messaging – Outlook Contact List

- Display name in the From field
- In the unified messaging copy of the message, insert the:
 - Name, Email Address, Phone number, Cell number
- In the Message notification for the message, insert the:
 - Name, Email Address, Phone number, Cell number

Calendar / Presence Status

- Automatic link to out-of-office assistant
- Mailbox > Personal schedule – program schedule based on Calendar and presence status:
 - Busy
 - Out of office
 - Free
- Follow Me rules to multiple destinations, in parallel including:
 - Screen calls
 - Announced transfer to another user
 - Record conversation
- Presence sensitive greeting – better inform out customers and associates

CentOS/PostgreSQL Migration

With Release 1.6, IPedge systems will move from RedHat Linux to CentOS 5.4. CentOS is short for Community ENTerprise Operating System. The users experience remains unchanged. Also, starting with Release 1.6, IPedge will be migrating from MySQL Enterprise Server Pro Edition database software to the open-source PostgreSQL database software. All new IPedge Release 1.6 systems will be shipping with CentOS and PostgreSQL. As with the CentOS, there are no differences in user-experience. All future IPedge applications will be backwards compatible with the original RedHat Linux and MySQL database software.

Messaging Version 10.6

IPedge release 1.6 now includes the latest version of Messaging 10.6. Below is a list of new features:

- IPMobility – new mechanism for Call Screening (real time notifications) of new calls, in-progress calls and outbound calls.
(when an incoming call arrives, mobile devices get the notification, and the user can decide how to handle the call (route to cell phone, route to a conference room phone, reject to mailbox, etc.)
- IPMobility – support for notification to multiple devices.
- Net Server Call Control – capture all calls before it rings at station and transfers according to personal schedule (solves the “4-ring” issue).
(when Follow Me is activated, the call to the desktop phone will be routed immediately to Messaging for Follow Me process)
- DCN Cluster
 - Ability to use random node numbers in DCN wizard (instead of sequential node numbers)
 - Ability to use any ssh port (not only 22)
- Password security – add black list password

Meeting Version 7

IPedge release 1.6 now includes the latest version of Meeting 7.0. Below is a list of new enhancements:

- Improved Web conferencing experience
The web conferencing engine has been optimized to be faster and more reliable, especially in networks where a proxy or other bandwidth / latency related delays would cause the previous version to disconnect.
- Throughput detection has been implemented
If the system senses slow throughput it will advise the user to turn off video sharing and other suggestions to improve performance.
- Improved recovery of re-registration
If error occurs on registration of an extension, Meeting has implemented registration recovery.
- Scheduling Method
Clickable Calendars – Users are now able to select a date by a Calendar GUI.
- Visual Changes

- The Menus are now in a Horizontal row across the top of the screen, with sub-menus appearing in vertical pull down menus.
- The icons on the first page have been removed, both for aesthetic and to facilitate translation.
- The vertical left menu has been replaced by the horizontal Menu.
- The submit and change buttons have been moved to the top of the screen.
- Tabs and expandable sections have been used for options and extra configuration pages.

Scheduling

Type: **Scheduled** Maximum ports:

First Occurrence

From: To:

Time Zone: **(GMT-08:00) Pacific Time (US & Canada)**

Recurrence Pattern

None
 Daily
 Weekly
 Monthly
 Yearly

July 2013						
Su	Mo	Tu	We	Th	Fr	Sa
	1	2	3	4	5	6
7	8	9	10	11	12	13
14	15	16	17	18	19	20
21	22	23	24	25	26	27
28	29	30	31			

August 2013						
Su	Mo	Tu	We	Th	Fr	Sa
					1	2
3	4	5	6	7	8	9
10	11	12	13	14	15	16
17	18	19	20	21	22	23
24	25	26	27	28	29	30
31						

Cancel **Submit**

Part Numbers

There is only one new part# for IPedge Release 1.6

I-MSG-EXC	Provides tight UM integration with Exchange 2007 or later. Message status including Read/Saved/Deleted is synchronized between the voicemail and Outlook client. Includes the greeting change based on the Outlook calendar
-----------	---

System Requirements

Application	Version	Date Released
TGZ	1.6.0.20	8/30/2013
GCP	1.6.4-1	7/30/2013
GeM	1.6.0-24	8/30/2013
GeM language pack	1.6.0-1	6/21/2013
GMS	1.6.0-3	6/20/2013
GNS	0.1.0-5	6/21/2013
GNS language pack	1.5.0-1	6/18/2013
GUM	10.6.1-8	8/14/2013
E911	1.2.1-3	6/18/2013
Webmin	1.491.17-4	8/8/2013
Bacula	5.0.2.22-3	8/8/2013
HMP	4.1.141-1	7/19/2013
GMMC	7.0.2	8/21/2013
IPT	2.16.2-1 [or M2P2]	4/23/2012
GCM	8.0.5.2	8/19/2013

Upgrade Requirements

Refer to the IPedge Install manual for detailed procedures regarding the following upgrades.

The Toshiba IPedge system must be running R1.5.1 TGZ 109 or later software before the system can be upgraded to R1.6 software. If your server is already running R1.5.1, TGZ 109, or later you can upgrade directly to R1.6 software.

IPedge systems running on R1.2 and R1.3 systems must be upgraded to R1.5.1 then to R1.6 software. This upgrade can be done using upgrade files available for download on the Toshiba FYI web site.

IPedge systems running on R1.1.2 and earlier systems must be upgraded to R1.5 using the Recovery disk, then to R1.5.1 using upgrade files available for download on the Toshiba FYI web site, and then to R1.6 software.

Important! Perform a manual database backup using the Backup and Restore tool before the software update. This backup file will be used in the event you choose to roll back the update. Store the backup file off of the IPedge server.

Upgrades Requiring an Additional Reboot

During Quality Assurance validation, we found that in the Beta version of the IPedge 1.6 software, the IPedge system requires a secondary reboot. After upgrading the IPedge from version 1.5.x to IPedge 1.6, the system will require a reboot. In rare cases, after the initial reboot, the IP telephones may fail to initialize. If this occurs, a secondary reboot is required to bring the system to operation.

Availability

The IPedge is currently available. Dealer Sales and Technical Training Certifications are required to purchase the IPedge system(s).

Trademarks

Toshiba, IPedge, VIPedge, CIX and Strata are registered trademarks of Toshiba Corporation or Toshiba America Information Systems, Inc.

AudioCodes is Registered trademark of AudioCodes Ltd.

Adtran is a registered trademark of Adtran, Inc.

Windows, Outlook, and Microsoft are registered trademarks of Microsoft.

All product, service and company names are trademarks, registered trademarks or service marks of their respective owners.